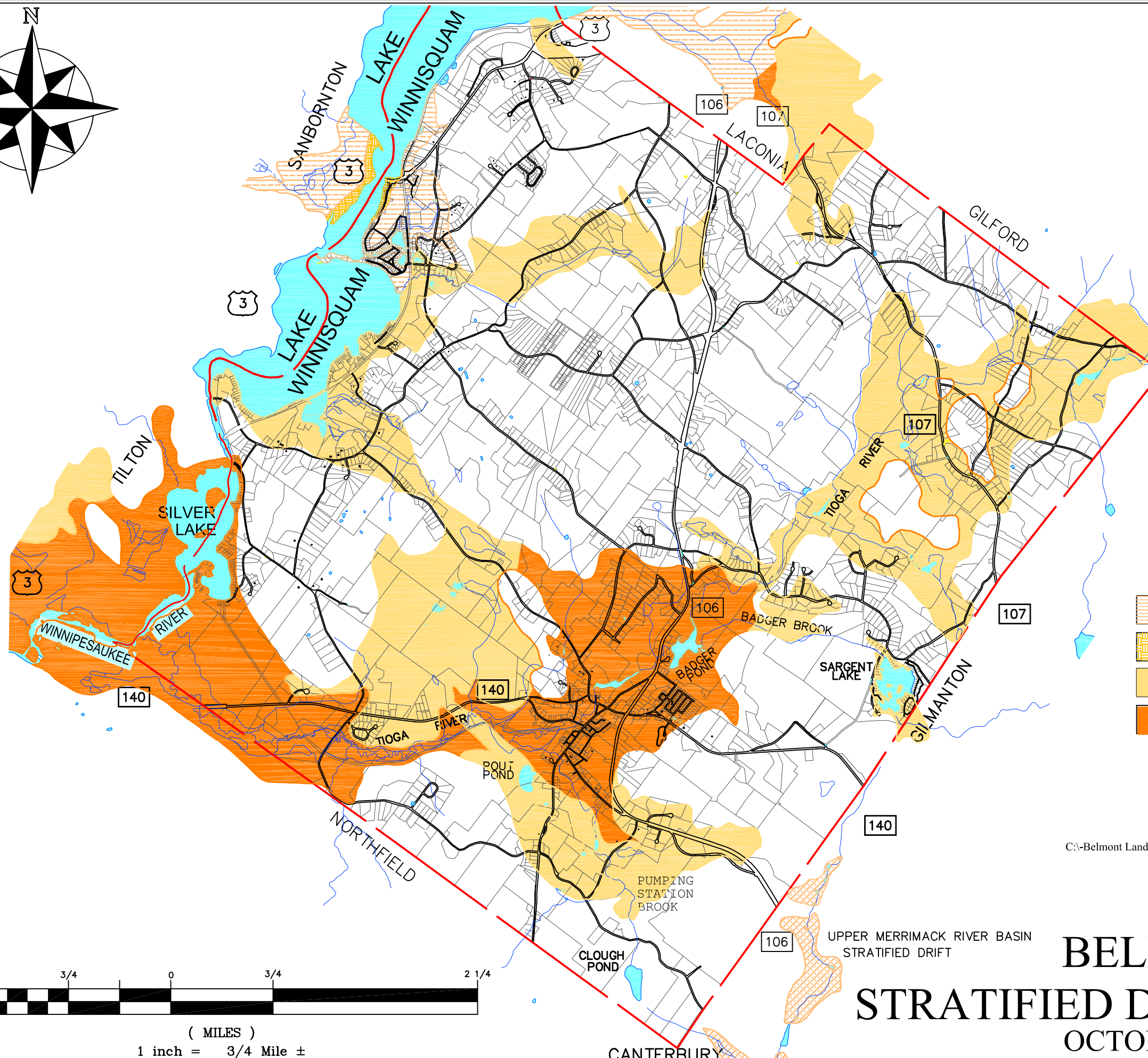






NOTES:
 Base map for Town of Belmont, NH by Cartographics Associates, Inc. New Hampshire Roads, Lakes, Ponds and Rivers and Aquifers were automated by the UNH Complex Systems Research Center.

Digital data in NH GRANIT represent the efforts of the contributing agencies to record information from the cited source materials. Complex Systems Research Center (CSRC), under contract to the Office of State Planning (OSP), and in consultation with cooperating agencies, maintains a continuing program to identify and correct errors in these data. Neither OSP nor CSRC make any claim as to the validity or reliability or to any implied uses of these data.

Stratified Drift: A type of glacial drift that has been partially sorted by glaciofluvial meltwater.



WINNIPESAUKEE RIVER BASIN

-  FINE-GRAINED STRATIFIED DRIFT
-  FINE OVER COARSE-GRAINED STRATIFIED DRIFT
-  COARSE GRAINED STRATIFIED DRIFT
-  COARSE OVER FINE-GRAINED STRATIFIED DRIFT

C:\Belmont Land Use Data\seal.jpg

UPPER MERRIMACK RIVER BASIN
 STRATIFIED DRIFT



(MILES)
 1 inch = 3/4 Mile ±

BELMONT

STRATIFIED DRIFT AQUIFERS

OCTOBER 2002