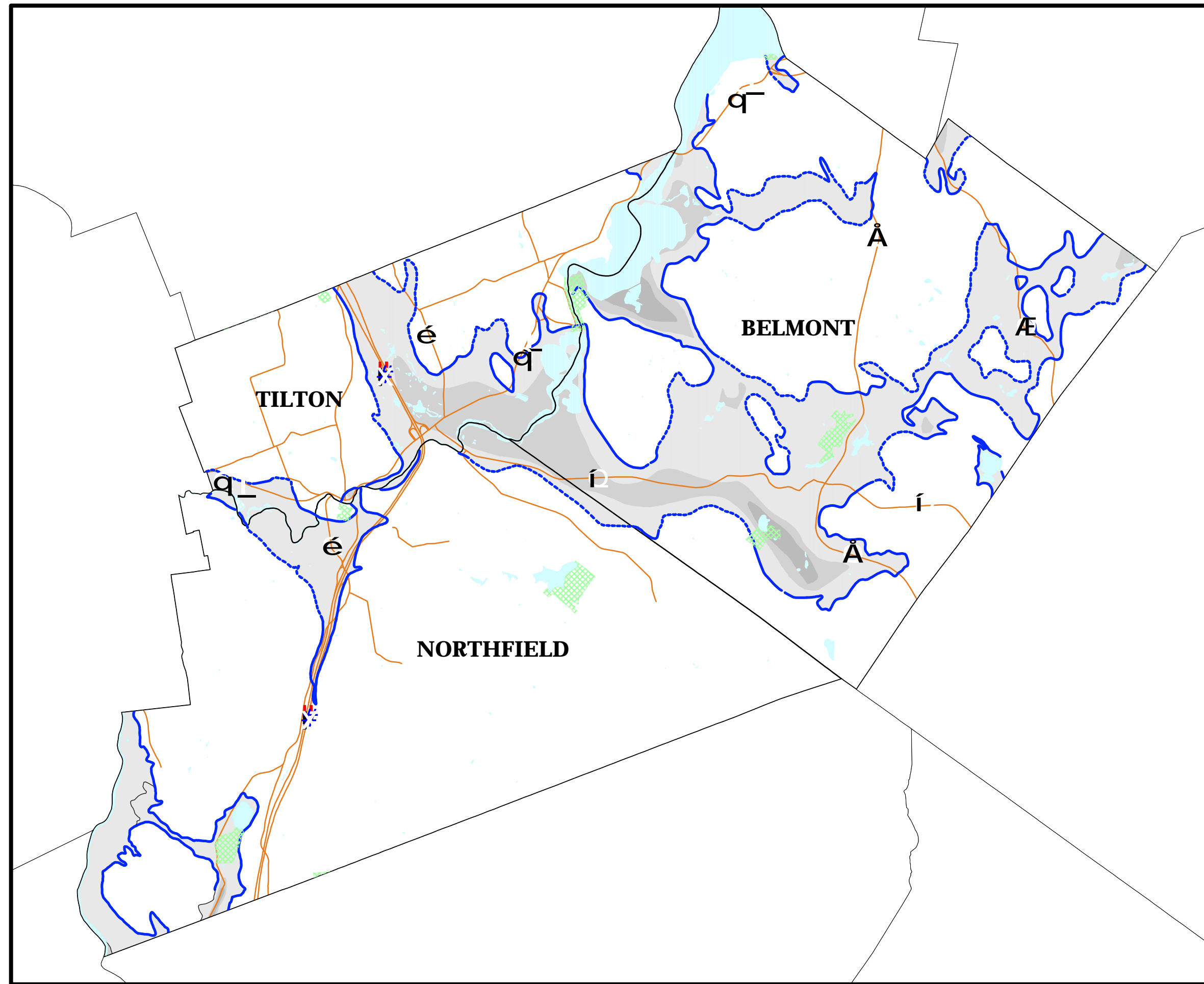


Map 1: Stratified Drift Aquifer Belmont, Northfield, Tilton



Stratified Drift Aquifer Transmissivity

- Up to 1000 ft²/day
- 1000 to 2000 ft²/day
- 2000 to 4000 ft²/day

Surface water

Aquifer boundary

- Approximately located
- Inferred
- Concealed

Study Area boundary/closure line

Stream or Shoreline

Primary/Secondary Road

Conservation Lands

Public Water Supply data maintained by the NH Department of Environmental Services.
 Stratified Drift Aquifer data provided by the U.S. Geological Survey NH/VT office.
 Base map - generalized from 1:100,000-scale USGS digital line graph data provided by GRANIT.



Map prepared July 30, 2003
 NH Dept. of Environmental Services
 In Cooperation with the
 Lakes Region Planning Commission