



STATE OF NEW HAMPSHIRE

GOVERNOR'S COMMISSION
ON DISABILITY

CANDY

ARCHITECTURAL BARRIER-FREE
DESIGN COMMITTEE

Craig R. Benson, Governor
Paul Van Blarigan, Chairman
Carol A. Nadeau, Executive Director

Mark Weir, Chair
Richard Cilley, Vice Chair
Cheryl L. Killam, Accessibility Specialist

57 Regional Drive
Concord, NH 03301-8518
(603) 271-2773
1-800-852-3405 Toll Free } Voice or TTY
(603) 271-2837 FAX

Direct Line (603) 271-4177
Email: cheryl.killam@nh.gov
Website: www.nh.gov/disability/abcommittee.htm

August 19, 2004

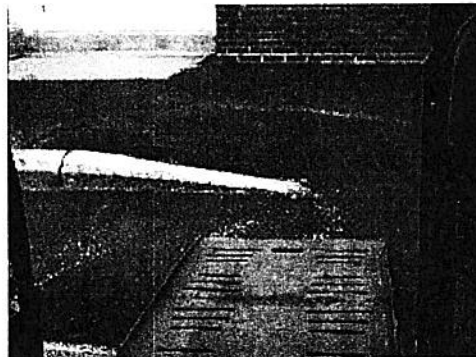
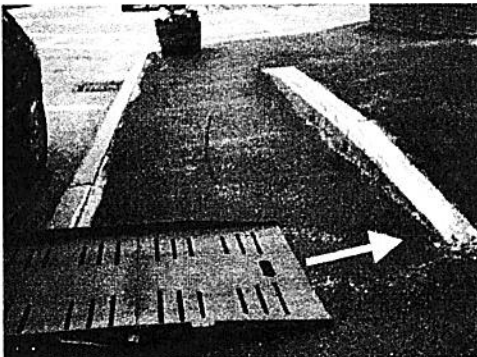
Donald P. McClelland, Sr., Town Administrator
Town of Belmont
PO Box 310
140 Main Street
Belmont, NH 03220-0310

Dear Mr. McClelland,

Thank you for your swift response to my letter dated July 13, 2004. I was disappointed that you were not able to meet with me on July 27 but I did meet with Gary Boisvert, Code Enforcement Official for the town of Belmont. Together we did an accessibility evaluation of the Town Hall.

As stated in previous letter, the ADA requires that municipal facilities be accessible to people with disabilities under Title II, Part A, State and Local Government (<http://www.usdoj.gov/crt/ada/reg2.html>). It further requires that your programs and services be made fully accessible. Gary is fully aware of these requirements and the standards set forth in the ADA Accessibility Guidelines (ADAAG).

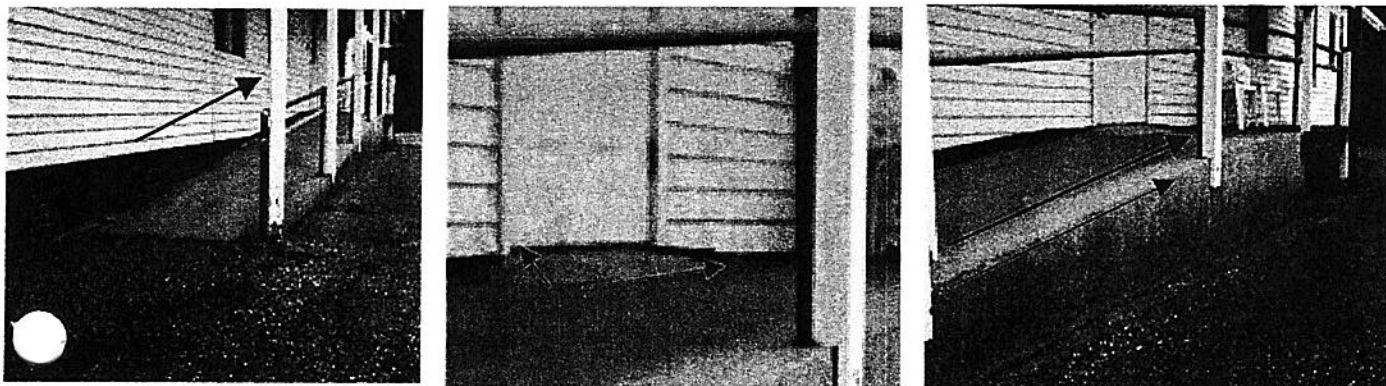
There should be at least one van-accessible parking space (a 96 inch wide space with an adjacent 96 inch wide access aisle). The existing on-street parallel *accessible* parking space is not compliant per ADAAG 4.6. An on-street parallel parking configuration cannot provide the required access aisle (ADAAG 4.6.3). The sidewalk has within it an additional curbing and a second level of sidewalk which, for a van with a lift or ramp that deploys on the passenger side of the vehicle, results in insufficient maneuvering space (a minimum of 96 inches in width). For other vehicles, either the driver would be forced to maneuver a wheelchair within the path of traffic or the passenger would have to maneuver the wheelchair next to the vehicle, several inches above the street level, on the sidewalk. Both of these are difficult and dangerous maneuvers.



Gary did state that handrails will be installed along this second level of the sidewalk to prevent falls from one level to the other, however, it remains that the location of this sidewalk interferes with exiting a vehicle.

The curb ramp does not have the required detectable warning per ADAAG 4.7.7.

The ramp does not meet the requirements of section 4.8 of ADAAG. The slope exceeds 1:12 (4.8.2) – the ramp is 32 inches in height and 26 feet 7 inches in length, for a grade of approximately 1:10; the landing at the top does not comply with 4.8.4, there is only one handrail where they should be on both sides of the ramp (4.8.5 (1)), and there is no edge protection along the street side of the ramp (4.8.7).



The door for the accessible entrance does not comply with ADAAG 4.13, specifically the maneuvering clearance at the door does not comply with ADAAG 4.13.6 and the threshold does not comply with ADAAG 4.13.8. The approach to the door should be on the level but the additional cement at the door exceeds a grade of 1:12 and is a potential hazard.

The restrooms do not have the proper signage (Braille and raised character letters – ADAAG 4.30.4) and the existing signs are not located where they should be per ADAAG 4.30.6. Additional directional signage to the various offices would be helpful as the accessible entrance brings you into a corridor where the offices are not in direct view. The existing signs are small and are mounted at a height that is not easily seen from a wheelchair sight-line.

Number of the restrooms is compliant mostly due to the direction of the door swing. With some clever maneuvering and much difficulty I was able to position my wheelchair in such a way that I could close the door to the ladies' room. I was not able to do the same in the men's room. By having the restroom doors swing out into the hall, the minimum clear floor space requirements for wheelchairs (36 inches by 48 inches) will be met. The pipes beneath the sinks must be insulated per ADAAG 4.19.4. There were miscellaneous items in the restrooms that should be removed.

The counter for the Town Clerk is 39 inches high and the one for Land Planning is 42 inches high. Both exceed the range of 28-34 inches (ADAAG 4.32.4).

Once again, thank you for inviting me to evaluate your facility. Please contact me with any further questions or comments.

Sincerely,

Cheryl L. Killam
Accessibility Specialist

cc: Gary Boisvert, Code Enforcement/Building Official